



TRINLADY PARK ROAD

TRINITY, TEXAS | COUNTY ROAD | 8.6 +/- ACRES



TRINLADY PARK ROAD



8.6 +/- acres located just outside Trinity city limits. The land has nice rolling topography, with a dry creek traversing a portion of the property. Nice stand of softwoods offers plenty of privacy with a cleared area that would make a great homesite. Property is intersected by a county maintained road, with electric nearby. Land is high and dry with no known restriction and a low tax rate. Come make this property your own!



Markham Realty
Selling Quality Texas Properties Since 1970
contact@markhamrealty.com
936-295-5989 | markhamrealty.com



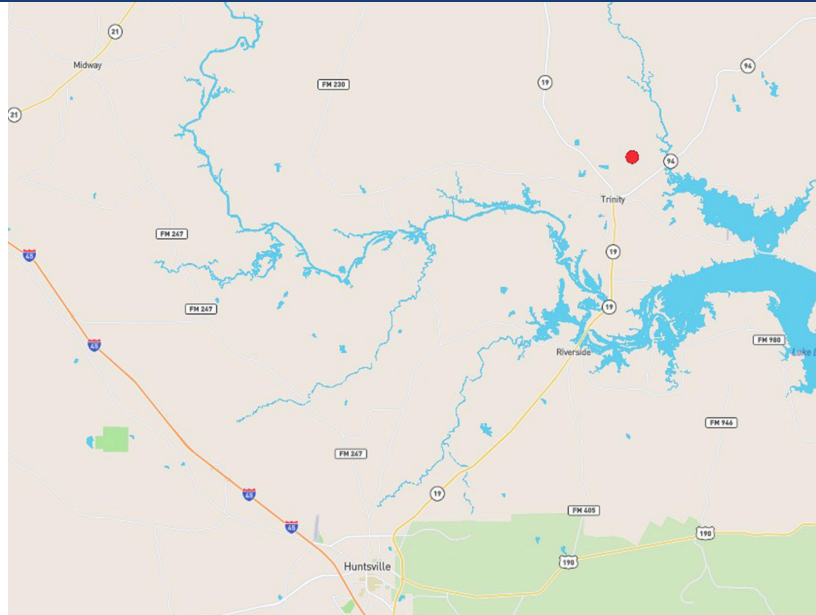
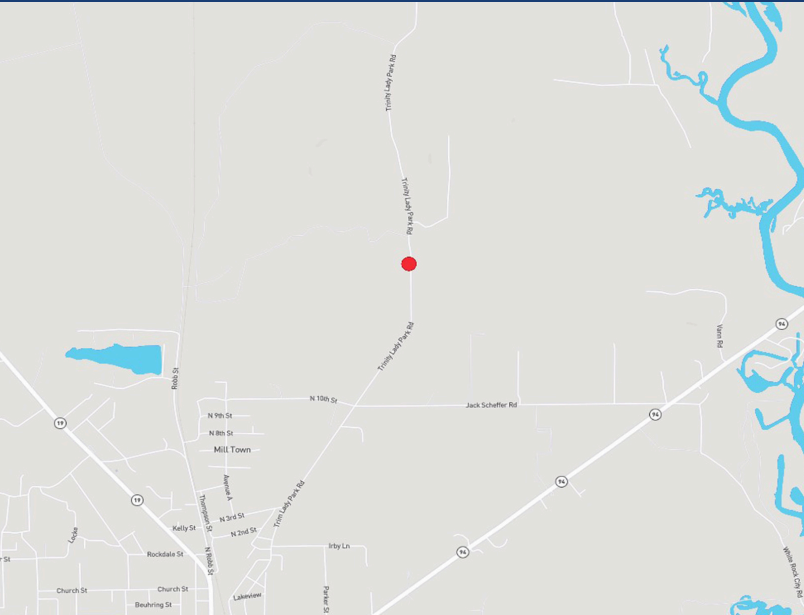
Scan here for additional information & photos.



Information furnished is from sources deemed reliable, but is not guaranteed by Markham Realty, Inc. The offerings are subject to change in price, errors, omissions, prior sales, or withdrawal without notice. Square footage, acreage size and lot dimensions are approximate. All persons and firms named in this brochure are licensed brokers or salespersons. Markham Realty, Inc. will co-broker with any licensed Broker if Broker and/or agent accompanies his or her prospective buyer from the first (1st) showing forward.

TRINLADY PARK ROAD

TRINITY, TEXAS



Directions: From Trinity, Take Hwy 94 to Groveton. Left on Trinlady Park Road. Property will be on left in 1.5 miles



Markham Realty
Selling Quality Texas Properties Since 1970
contact@markhamrealty.com
936-295-5989 | markhamrealty.com



Scan here for additional information & photos.



Information furnished is from sources deemed reliable, but is not guaranteed by Markham Realty, Inc. The offerings are subject to change in price, errors, omissions, prior sales, or withdrawal without notice. Square footage, acreage size and lot dimensions are approximate. All persons and firms named in this brochure are licensed brokers or salespersons. Markham Realty, Inc. will co-broker with any licensed Broker if Broker and/or agent accompanies his or her prospective buyer from the first (1st) showing forward.